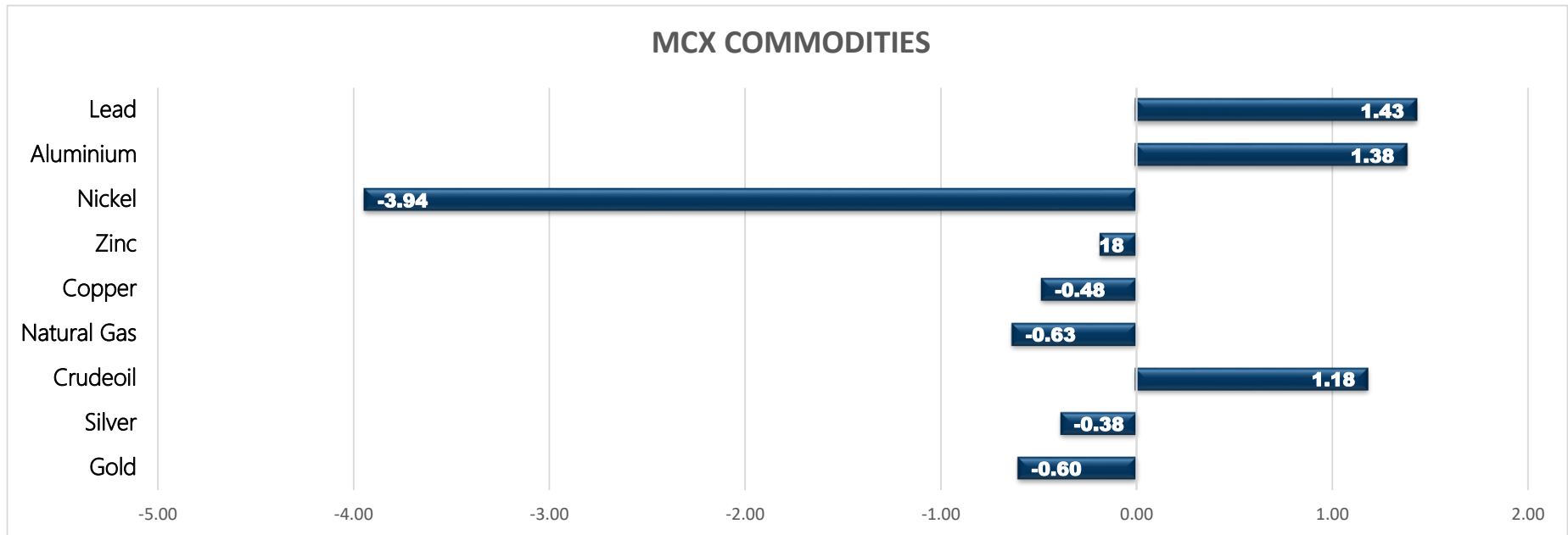


Commodity	Closed	% Change
Gold	46241.00	-0.60
Silver	69276.00	-0.38
Crudeoil	4622.00	1.18
Natural Gas	203.70	-0.63
Copper	720.35	-0.48
Zinc	225.70	-0.18
Nickel	1375.70	-3.94
Aluminium	175.85	1.38
Lead	173.30	1.43

Commodity	Ltp*	% Change
Gold\$	1771.50	0.08
Silver\$	27.35	-0.23
Crudeoil\$	63.53	0.49
Natural Gas\$	2.78	-0.64
Lme Copper	9324.50	-0.33
Lme Zinc	2850.50	-0.45
Lme Nickel	19005.00	0.58
Lme Lead	2129.00	-0.75
Lme Aluminium	2205.50	-0.59

Economical Data	
EUR	German Import Prices m/m
EUR	French Consumer Spending m/m
EUR	French Prelim CPI m/m
EUR	French Prelim GDP q/q
EUR	Spanish Flash CPI y/y
USD	Core PCE Price Index m/m
USD	Goods Trade Balance
USD	Personal Income m/m
USD	Personal Spending m/m

MCX COMMODITIES



MCX MARKET SYNOPSIS

Contract	Open	High	Low	Close	Rs Chg	% Chg	Volume	OI	% Chg
Crude Oil Mar	4595.00	4654.00	4565.00	4622.00	54.00	1.18	83313	4067	-2.05
Crude Oil Apr	4620.00	4661.00	4573.00	4628.00	49.00	1.07	493	105	-3.67
Crude Oil May	0.00	0.00	0.00	4633.00	44.00	0.96	0	0	0.00

Contract	Open	High	Low	Close	Rs Chg	% Chg	Volume	OI	% Chg
Natural Gas Mar	204.00	207.80	201.50	203.70	-1.30	-0.63	210609	7575	6.54
Natural Gas Apr	206.00	211.00	204.40	206.40	-1.10	-0.53	5349	1898	9.71
Natural Gas 0	0.00	0.00	0.00	0.00	0.00	0.00	0	0	0.00

MCX PIVOT

Contract	Sup - 3	Sup - 2	Sup - 1	Pivot	Res - 1	Res - 2	Res - 3	OI Status
Crude Oil Mar	4485.00	4525.00	4574.00	4614.00	4663.00	4703.00	4752.00	Short Covering
Natural Gas Mar	194.50	198.00	200.80	204.30	207.10	210.60	213.40	Fresh Selling

SPREAD SYNOPSIS

Crudeoil				
Month	Rate	Mar	Apr	May
Mar	4622.00		6.00	11.00
Apr	4628.00			5.00
May	4633.00			

Natural Gas				
Month	Rate	Mar	Apr	0
Mar	203.70		2.70	-203.70
Apr	206.40			-206.40
0	0.00			

Spread History			
Commodity	Max	Min	Avg
Crudeoil	636.00	-39.00	43.00
Natural Gas	64.10	-19.90	5.00

INTERNATIONAL MARKET SYNOPSIS

Crudeoil Last 4 Day Movement								Pivot		
Date	Open	High	Low	Close	Rs Chg	% Chg		Res - 1	Res - 2	Res - 3
25-Feb-21	63.39	63.81	62.65	63.53	0.31	0.49%		64.01	64.49	65.17
24-Feb-21	61.29	63.51	60.97	63.22	1.55	2.51%		Sup - 1	Sup - 2	Sup - 3
23-Feb-21	62.16	63	60.67	61.67	-0.03	-0.05%		62.85	62.17	61.69
22-Feb-21	58.93	62.22	58.82	61.7	2.44	4.12%				

NaturalGas Last 4 Day Movement								Pivot		
Date	Open	High	Low	Close	Rs Chg	% Chg		Res - 1	Res - 2	Res - 3
25-Feb-21	2.806	2.855	2.761	2.777	-0.018	-0.64%		2.834	2.892	2.928
24-Feb-21	2.866	2.868	2.791	2.795	-0.062	-2.17%		Sup - 1	Sup - 2	Sup - 3
23-Feb-21	2.921	2.932	2.842	2.857	-0.079	-2.69%		2.740	2.704	2.646
22-Feb-21	2.934	2.962	2.865	2.936	-0.055	-1.84%				

CRUDEOIL

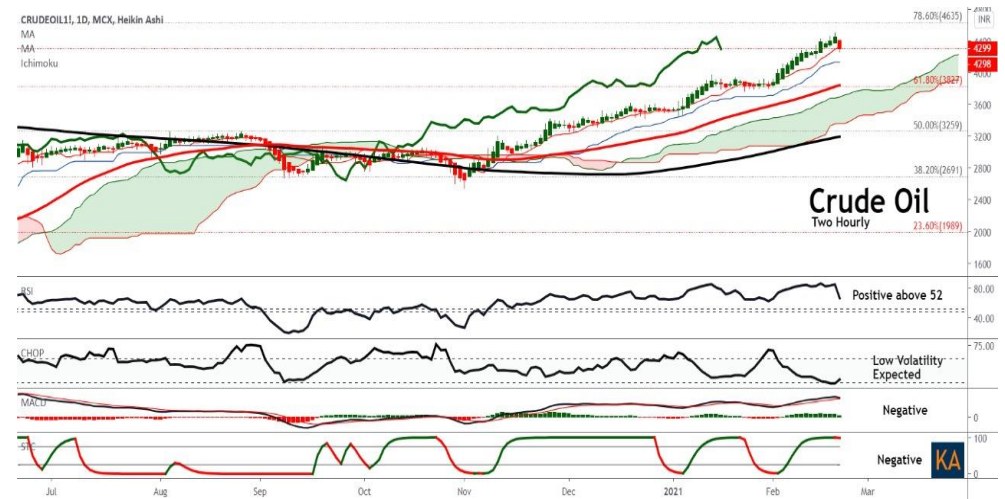
Crude oil trading range for the day is 4525-4703.

Crude oil prices climbed after U.S. government data showed a drop in crude output after a deep freeze disrupted production last week.

OPEC+ to weigh modest oil output boost at meeting

U.S. crude oil production dropped by more than 1 million barrels per day last week during Texas's deep freeze, equalling the largest weekly fall ever

Overall output fell by 1.1 million bpd to 9.7 million bpd in the week to Feb. 19, the EIA said



NATURAL GAS

Natural gas trading range for the day is 198-210.6.

Natural gas prices dropped as rising output and a small decline in liquefied natural gas (LNG) exports put pressure on prices

The U.S. EIA said U.S. utilities pulled 338 billion cubic feet (bcf) of gas from storage, the second biggest draw on record.

Refinitiv projected average gas demand, including exports, would fall from 116.4 bcf this week to 106.2 bcf next week as the weather turns milder.

Those forecasts were lower than Refinitiv projected on Tuesday despite expectations for rising exports.



## CRUDE OIL PRICE MOVEMENT SINCE 2011

	JAN	FEB	MAR	APR	MAY	JUN	JUL	AUG	SEP	OCT	NOV	DEC	Growth
2011	4229	4444	4744	5047	4631	4241	4237	4081	3995	4516	5219	5296	1208.00
	3.45	5.08	6.75	6.39	-8.24	-8.42	-0.09	-3.68	-2.11	13.04	15.57	1.48	28.56
2012	4927	5227	5274	5514	4929	4695	4921	5358	4887	4666	4838	5015	-281.00
	-6.97	6.09	0.90	4.55	-10.61	-4.75	4.81	8.88	-8.79	-4.52	3.69	3.66	-5.31
2013	5202	5076	5400	5014	5273	5763	6409	7246	6440	5996	5839	6122	1107.00
	3.73	-2.42	6.38	-7.15	5.17	9.29	11.21	13.06	-11.12	-6.89	-2.62	4.85	22.07
2014	6169	6371	6119	6015	6106	6337	6006	5831	5673	4931	4210	3369	-2753.00
	0.77	3.27	-3.96	-1.70	1.51	3.78	-5.22	-2.91	-2.71	-13.08	-14.62	-19.98	-44.97
2015	2855	3064	3025	3790	3869	3776	3038	3230	2979	3068	2798	2493	-876.00
	-15.26	7.32	-1.27	25.29	2.08	-2.40	-19.54	6.32	-7.77	2.99	-8.80	-10.90	-26.00
2016	2286	2321	2572	3035	3333	3304	2782	3003	3212	3153	3377	3541	1048.00
	-8.30	1.53	10.81	18.00	9.82	-0.87	-15.80	7.94	6.96	-1.84	7.10	4.86	42.04
2017	3614	3566	3284	3174	3127	2968	3183	3038	3373	3528	3687	3850	309.00
	2.06	-1.33	-7.91	-3.35	-1.48	-5.08	7.24	-4.56	11.03	4.60	4.51	4.42	8.73
2018	4112	4093	4234	4583	4517	5086	4734	4959	5335	4892	3576	3170	-680.00
	6.81	-0.46	3.44	8.24	-1.44	12.60	-6.92	4.75	7.58	-8.30	-26.90	-11.35	-17.66
2019	3869	4090	4185	4467	3775	4095	4032	3958	3880	3853	3980	4386	1216.00
	22.05	5.71	2.32	6.74	-15.49	8.48	-1.54	-1.84	-1.97	-0.70	3.30	10.20	38.36
2020	3683	3263	1689	1315	2564	3015	3023	3145	2934	2642	3326	3524	-862.00
	-16.03	-11.40	-48.24	-22.14	94.98	17.59	0.27	4.04	-6.71	-9.95	25.89	5.95	-19.65
2021	3820												296.00
	8.40												8.40

## NATURAL GAS PRICE MOVEMENT SINCE 2011

Year	JAN	FEB	MAR	APR	MAY	JUN	JUL	AUG	SEP	OCT	NOV	DEC	Growth
2011	200.20	185.70	197.40	208.30	211.40	196.00	185.10	185.60	184.40	192.80	187.70	161.50	-36.30
	1.21	-7.24	6.30	5.52	1.49	-7.28	-5.56	0.27	-0.65	4.56	-2.65	-13.96	-18.35
2012	125.40	128.70	110.20	120.70	140.20	155.90	178.50	155.50	176.10	201.90	195.80	184.90	23.40
	-22.35	2.63	-14.37	9.53	16.16	11.20	14.50	-12.89	13.25	14.65	-3.02	-5.57	14.49
2013	178.20	192.10	221.90	232.60	227.70	214.80	210.80	239.50	223.80	223.00	246.70	265.50	80.60
	-3.62	7.80	15.51	4.82	-2.11	-5.67	-1.86	13.61	-6.56	-0.36	10.63	7.62	43.59
2014	302.60	288.10	262.50	292.60	271.20	269.90	237.60	246.90	257.80	239.90	259.30	189.10	-76.40
	13.97	-4.79	-8.89	11.47	-7.31	-0.48	-11.97	3.91	4.41	-6.94	8.09	-27.07	-28.78
2015	168.40	167.70	167.00	175.60	169.80	179.90	174.80	178.70	166.70	152.00	150.30	155.90	-33.20
	-10.95	-0.42	-0.42	5.15	-3.30	5.95	-2.83	2.23	-6.72	-8.82	-1.12	3.73	-17.56
2016	155.90	118.10	129.90	143.80	155.00	197.30	192.90	194.40	194.00	204.10	229.60	252.00	96.10
	0.00	-24.25	9.99	10.70	7.79	27.29	-2.23	0.78	-0.21	5.21	12.49	9.76	61.64
2017	212.80	185.00	205.80	212.10	198.60	193.80	180.00	194.80	198.40	187.80	197.10	189.70	-62.30
	-15.56	-13.06	11.24	3.06	-6.36	-2.42	-7.12	8.22	1.85	-5.34	4.95	-3.75	-24.72
2018	190.50	175.90	179.40	183.80	199.50	200.80	192.80	206.90	218.00	241.60	317.40	212.20	22.50
	0.42	-7.66	1.99	2.45	8.54	0.65	-3.98	7.31	5.36	10.83	31.37	-33.14	11.86
2019	201.50	199.50	186.70	180.80	172.30	160.50	155.10	164.00	165.80	187.00	167.20	155.50	-56.70
	-5.04	-0.99	-6.42	-3.16	-4.70	-6.85	-3.36	5.74	1.10	12.79	-10.59	-7.00	-26.72
2020	132.40	124.30	131.50	144.20	135.90	130.40	135.60	190.70	186.50	247.70	216.70	182.10	26.60
	-14.86	-6.12	5.79	9.66	-5.76	-4.05	3.99	40.63	-2.20	32.82	-12.52	-15.97	17.11
2021	191.50												9.40
	5.16												5.16

The logo for Kedia Advisory, featuring the text "KEDIA ADVISORY" in a sans-serif font. "KEDIA" is in yellow and "ADVISORY" is in white, both set against a dark blue rectangular background.

KEDIA STOCKS & COMMODITIES RESEARCH PVT LTD.  
Mumbai. INDIA.

For more details, please contact:  
Mobile: +91 9323406035 / 9320096333 / 9619551022  
Email: [info@kediaadvisory.com](mailto:info@kediaadvisory.com)  
URL: [www.kediaadvisory.com](http://www.kediaadvisory.com)  
SEBI REGISTRATION NUMBER - INH000006156

General Disclaimers: This Report is prepared and distributed by Kedia Stocks & Commodities Research Pvt Ltd. for information purposes only. The recommendations, if any, made herein are expression of views and/or opinions and should not be deemed or construed to be neither advice for the purpose of purchase or sale through KSCRPL nor any solicitation or offering of any investment /trading opportunity. These information / opinions / views are not meant to serve as a professional investment guide for the readers. No action is solicited based upon the information provided herein. Recipients of this Report should rely on information/data arising out of their own investigations. Readers are advised to seek independent professional advice and arrive at an informed trading/investment decision before executing any trades or making any investments. This Report has been prepared on the basis of publicly available information, internally developed data and other sources believed by KSCRPL to be reliable. KSCRPL or its directors, employees, affiliates or representatives do not assume any responsibility for, or warrant the accuracy, completeness, adequacy and reliability of such information / opinions / views. While due care has been taken to ensure that the disclosures and opinions given are fair and reasonable, none of the directors, employees, affiliates or representatives of KSCRPL shall be liable for any direct, indirect, special, incidental, consequential, punitive or exemplary damages, including lost profits arising in any way whatsoever from the information / opinions / views contained in this Report. The possession, circulation and/or distribution of this Report may be restricted or regulated in certain jurisdictions by appropriate laws. No action has been or will be taken by KSCRPL in any jurisdiction (other than India), where any action for such purpose(s) is required. Accordingly, this Report shall not be possessed, circulated and/ or distributed in any such country or jurisdiction unless such action is in compliance with all applicable laws and regulations of such country or jurisdiction. KSCRPL requires such recipient to inform himself about and to observe any restrictions at his own expense, without any liability to KSCRPL. Any dispute arising out of this Report shall be subject to the exclusive jurisdiction of the Courts in India.